

Europe

Beer Connoisseurs Journey with Joshua M. Bernstein



trip highlights

Munich Beer Heritage - Explore Bavaria's rich brewing traditions with visits to Andechs Monastery Brewery and Ayinger, including guided tastings.

Bamberg Excursion - Discover this UNESCO-listed town, famous for its unique smoked beers, with a brewery visit and beer seminar at Weyermann.

Scenic Journey to Prague - Travel through Central Europe from Munich to Prague, experiencing two iconic beer cultures in one trip.

Prague Craft Beer Scene - Dive into Prague's vibrant beer culture with tastings at traditional beer halls and modern microbreweries.

Pilsner Urquell Experience - Visit the birthplace of Pilsner in Pilsen with a guided brewery tour and tasting.

Behind-the-Scenes Access - Enjoy expert-led tours, exclusive tastings, and insights into brewing techniques across multiple breweries.

Expert Beer Experiences - Participate in a specialist beer seminar and guided tastings with knowledgeable hosts.



Trip Duration	7 days	Trip Code: BCJ
Grade	Adventure touring	
Summary	6 nights	

welcome to World Expeditions

For over 50 years, we've been creating high-quality, expedition-style adventures for active travellers with a curious spirit. From our very first trek in the mountains of Nepal to pioneering remote routes across all seven continents, our journeys are built for those who want to truly explore – not just visit.

At the heart of what we do is a simple philosophy: take the paths less travelled.

This means travelling with care, supporting local communities, minimising our impact, and unlocking experiences that most travellers will never have.

If you're ready to go further and dig deeper, we invite you to join us on the Beer Connoisseurs Journey with Joshua M. Bernstein, a journey that captures the essence of a unique adventure.



Beer Connoisseurs Journey with Joshua M. Bernstein



Single travellers are required to pay a single supplement when joining this adventure. Please refer to our website for the additional cost.

the trip

Join acclaimed beer writer Joshua M. Bernstein and fellow beer enthusiasts on a curated journey through two of Europe's most iconic beer destinations Bavaria and the Czech Republic. This immersive small-group experience explores centuries-old brewing traditions, from the monastic heritage of Bavaria to the birthplace of Pilsner in Bohemia.

Discover Munich's legendary beer culture with visits to historic breweries such as Andechs Monastery and Ayinger, alongside a full-day excursion to Bamberg, a UNESCO-listed town renowned for its distinctive smoked beers. Continue to Prague, where a rich and evolving craft beer scene awaits, including tastings at local microbreweries and traditional beer halls.

Enjoy private brewery tours, guided tastings with local experts, and exclusive behind-the-scenes access, including visits to Pilsner Urquell in Pilsen and some of Prague's most exciting new breweries. Along the way, savour regional cuisine paired with exceptional beers and experience the vibrant culture that surrounds them.

Blending cultural discovery, authentic local experiences, and world-class brewing heritage, this journey offers a deep dive into Central Europe's most celebrated beer traditions, enriched by expert insight throughout.

about your leader/escort

Joshua M. Bernstein is an award-winning author, journalist, and consultant specializing in beer and beverage alcohol. Bernstein regularly contributes to the Wall Street Journal, Men's Journal, the New York Times, VinePair, and Imbibe, where he's a contributing editor in charge of beer coverage. Bernstein is also the author of six books, including *The Complete Beer Course*, a best seller that has sold more than 100,000 copies and been translated into multiple languages. He loves sipping several crisp pilsners on a sunny afternoon.

at a glance

DAY 1	WILLKOMMEN IN MUNICH
DAY 2	BAVARIAN MONASTIC BREWING TRADITIONS
DAY 3	BAMBERG BEER HERITAGE
DAY 4	MUNICH TO PRAGUE
DAY 5	THE BIRTHPLACE OF PILSNER
DAY 6	PRAGUE BEER CULTURE
DAY 7	DEPARTURE

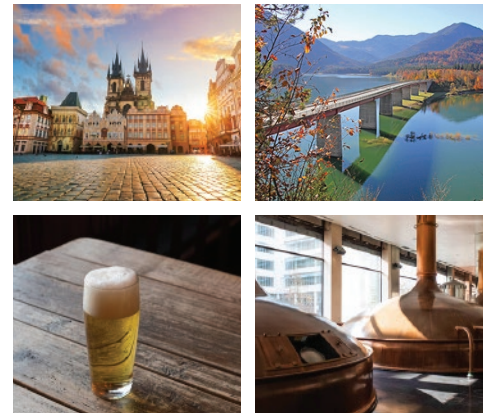
what's included

- 6 nights in 4-star accommodation
- Accompanied by acclaimed beer writer and author Joshua M. Bernstein
- Daily hot buffet breakfast
- 3 dinners including local beer
- All transport within the itinerary (private coach & train travel)
- Guided brewery tours and tastings in Munich, Bamberg, Prague & Pilsen
- Visits to iconic breweries including Andechs Monastery, Ayinger, Weyermann, Pilsner Urquell & more
- Beer seminar and expert-led tastings
- Selected sightseeing and cultural experiences

what's not included

- International flights
- Travel insurance (compulsory)

Beer Connoisseurs Journey with Joshua M. Bernstein



trip dates

2027 04 May- 10 May

fast facts

Countries Visited:
Germany & Czechia

Visas:

****IMPORTANT NOTE****

ETIAS will be introduced in the last quarter of 2026. No action is required from travellers at this point.

The European Union will inform about the specific date for the start of ETIAS several months prior to its launch.

see https://travel-europe.europa.eu/etias_en

Until then, visas not required for citizens of Australia, Canada, USA and New Zealand for up to 90 days in a period of 180 days for all Schengen countries (see https://home-affairs.ec.europa.eu/policies/schengen-borders-and-visa/visa-policy_en). Please ensure your passport is stamped on arrival in the Schengen area. For all other nationalities and for longer stays in countries covered by the Schengen Agreement (Australian New Zealand, Canadian and US passport holders), please contact the relevant embassy. Stays of longer than 90 days in the Schengen area require a long stay visa for the country you are spending most time in. However long stay visas are unlikely to be issued unless there is a valid reason (eg. studying in country). Unfortunately we cannot assist in obtaining visas for long stays due to individual country visa requirements.

Leader:

Expert local guides for each section

Advice for people with limited mobility

This trip is not suitable for people with limited mobility.

*Ask our staff for more information.

- Meals not specified in the itinerary
- Drinks beyond those included during tastings or dinners
- Optional activities and personal expenses
- Tips and gratuities for guides and drivers
- Porterage at hotels
- Visa fees or travel authorisations (e.g. ETIAS, if applicable)
- Tour leader

detailed itinerary

DAY 1 Willkommen in Munich

Arrive in Munich, the historic capital of Bavaria and one of the world's great beer cities.

The remainder of the afternoon is free to settle in or explore Munich's lively streets and historic beer halls.

In the evening, meet your fellow travellers for a welcome dinner at the renowned Paulaner Brauhaus, where traditional Bavarian cuisine is paired with freshly brewed beer the perfect introduction to Germany's rich brewing culture.

Overnight: Eurostars Book Hotel, Munich or similar

meals: D

DAY 2 Bavarian Monastic Brewing Traditions

Set out on a scenic journey through the Bavarian countryside to the historic Andechs Monastery, renowned for its centuries-old brewing tradition and some of Germany's most celebrated beers. Here, enjoy an immersive brewery experience featuring a virtual reality presentation and a guided tasting that brings the monastery's rich heritage to life.

Continue to the charming village of Aying for a visit to one of the region's distinguished breweries, where you'll gain behind-the-scenes insight into traditional brewing methods and sample a selection of their acclaimed beers.

Return to Munich in the evening, where you'll have free time to explore and enjoy dinner at your leisure.

Overnight: Eurostars Book Hotel, Munich (or similar)

meals: B

DAY 3 Bamberg Beer Heritage

Begin your day with a hearty hot buffet breakfast at your hotel. Afterwards, make your own way to Munich's train station and board your train to Bamberg (approx. 2 hours 30 minutes, 2nd class return ticket included). A Munich Transport Pass (MVV, Zone M-2, 1 day) is provided for your convenience.

Upon arrival in Bamberg, enjoy a short walk (approx. 10 minutes) to the renowned Weyermann Specialty Malts brewery. Here, take part in an insightful English-guided tour, including a fascinating beer seminar and tasting session, offering a deeper understanding of traditional malting and brewing techniques.

Following your visit, walk back to the station and board your return train to Munich.

Arrive back in Munich and make your own way to your hotel. In the evening, enjoy a traditional 3-course dinner with one beer at the historic Zum Franziskaner restaurant.

Overnight: Eurostars Book Hotel, Munich (or similar)

meals: B,D

Beer Connoisseurs Journey with Joshua M. Bernstein



thoughtful travel

Our World Expeditions adventures are grounded in a deep commitment to regenerative travel, going beyond minimising harm to actively restoring and enriching the places we visit. We partner closely with local communities, ensuring that our trips support cultural preservation, fair livelihoods, and community-led initiatives. Each expedition is designed to protect and regenerate natural ecosystems through low-impact practices, climate action, and education that fosters respect for biodiversity. We prioritise meaningful connections between travellers and place, encouraging a sense of stewardship that lasts well beyond the journey. By embedding sustainability into every layer of our operations, we aim not only to explore the world responsibly but also to leave it healthier, more resilient, and more vibrant for future generations.

trip grading Adventure touring

Grade 2: Adventure Touring

These adventure tours sometimes visit remote areas where facilities are often basic. Many of these trips might involve some camping or basic lodging. These adventure tours will often involve long journeys and rough roads. To enjoy these adventures we suggest reasonable fitness and health, a moderately active lifestyle and a positive attitude.

adventure travel

By its very nature adventure travel involves an element of the unexpected. In remote and developing countries do not expect standards you are used to at home. Remote areas are sometimes unpredictable and itineraries may be altered. To get the most out of your adventure it is important that you are flexible, positive and eager to take on all the challenges that arise. If you are uncertain about your suitability for this trip we recommend that you speak with your consultant or travel agent.

DAY 4 Munich to Prague

Enjoy a hot buffet breakfast at your hotel in Munich before checking out of the Eurostars Book Hotel (or similar). A private coach will transfer you to Munich train station, where you will board your 2nd class train to Prague (journey time approximately 5 hours 40 minutes). Upon arrival in Prague, you will be met by an English-speaking assistant and transferred by private coach to your hotel, the Grand Majestic Plaza (or similar), where you will check in. In the evening, experience a delightful introduction to Czech brewing culture with a craft beer tasting and local beer delicacies at U Kunstatu. Dinner is at your leisure.

meals: B

DAY 5 The Birthplace of Pilsner

Start your day with a hot buffet breakfast at your hotel in Prague before setting out on a full-day excursion to Pilsen. Travel by private coach (approximately 1 hour 45 minutes each way) to the birthplace of Pilsner beer, where you will enjoy a guided tour and tasting at the iconic Pilsner Urquell Brewery. Continue your brewery experience with a visit to Dva Kohouti for an additional tour and tasting, offering a contemporary take on Czech brewing traditions. Return to Prague in the late afternoon, where the evening is at your leisure and dinner is not included.

Overnight: Hotel Century Old Town Prague – MGallery Hotel Collection (or similar)

meals: B

DAY 6 Prague Beer Culture

Begin your day with a hot buffet breakfast at your hotel in Prague before setting out for a morning brewery visit. Travel by private coach for a half-day sightseeing experience, including a visit to the historic Pivovar Monastery Brewery, where you'll enjoy a guided tour and tasting. Return to your hotel before heading out again in the afternoon for an in-depth Prague brewery tour with a local beer master, visiting three distinctive microbreweries over approximately three hours.

In the evening, celebrate your journey with a farewell dinner at the renowned Klášterní Pivovar Strahov, where you'll enjoy a 3-course meal paired with one beer. Private coach transfers are included to and from the restaurant. Return to your hotel afterwards.

Overnight: Hotel Century Old Town Prague – MGallery Hotel Collection (or similar)

meals: B,D

DAY 7 Departure

After breakfast your amazing journey in Germany and Czech ends, please let us know if you wish to extend your stay.

meals: B

This itinerary is subject to change with any change in Community regulations as well as Governmental changes and natural circumstances beyond our control.

climate

Average air temperatures in early May in Munich and Prague are mild and gradually warming as spring progresses. Overall, the weather is pleasant and well-suited for sightseeing and outdoor activities. On average, daily temperatures range between 8°C (46°F) and 18°C (64°F) during this period. In the first half of May, mornings and evenings can be cool, with temperatures around 8–10°C (46–50°F), while daytime highs typically reach 16–18°C (61–64°F).

Beer Connoisseurs Journey with Joshua M. Bernstein



important note

These trip notes represent the most current information for this itinerary, and may supersede any information on our website, including but not limited to the itinerary and price. The itinerary should be seen as a guide only. This itinerary may change at any time due to inclement weather, forces of nature and other circumstances beyond our control.

Both Munich and Prague experience similar spring conditions at this time of year, with a mix of sunny intervals and occasional light showers. The most comfortable temperatures are usually felt from late morning through the afternoon, making it an ideal time for walking tours and brewery visits.

As the month progresses, days become longer and slightly warmer, though evenings remain cool. Light layers and a jacket are recommended to stay comfortable throughout the day.

dietary requirements

Provided we are advised in advance of your departure we are able to cater for vegetarian diets and can assist with medically recommended diets (allergies and intolerances). Please ensure you discuss your requirements with us well in advance (at least 1 month prior to your trip) to determine whether we can cater to such dietary requirements on your chosen adventure. Please note that options are likely to be limited in very remote locations or alternatives may be more expensive or unavailable. There may be times when those with special requirements may need to provide their own food. We are unable to guarantee a peanut-free or allergen-free trip, and therefore, we strongly encourage that travellers with life-threatening or severe allergies take all necessary medical precautions to prepare for the possibility of exposure. Passengers must travel with all necessary medications for food allergies and be capable of self-administering these medications.

accommodation on the trip



During the trip we use a combination of 3 and 4 star hotels chosen for their comfort and convenience to the cycle route.

vehicles & safety

During the course of your trip, we will use a variety of vehicles, all of which are fit for purpose and the conditions encountered. It should be noted that laws governing transportation safety may differ from those in your home country and whilst wherever possible, vehicles with seatbelts are provided, on occasion some vehicles may not have seat belts fitted.

visas

Germany

****IMPORTANT NOTE****

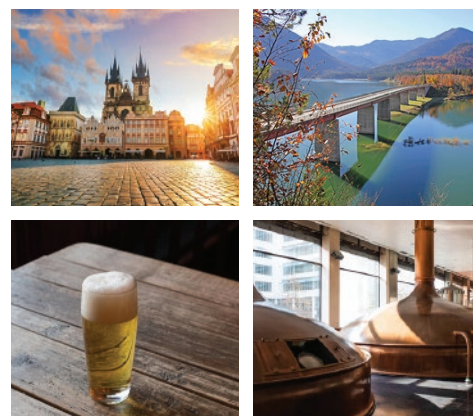
ETIAS will be introduced in the last quarter of 2026. No action is required from travellers at this point.

The European Union will inform about the specific date for the start of ETIAS several months prior to its launch.

see https://travel-europe.europa.eu/etias_en

Until then, visas not required for citizens of Australia, Canada, USA and New Zealand for up to 90 days in a period of 180 days for all Schengen countries (see https://home-affairs.ec.europa.eu/policies/schengen-borders-and-visa/visa-policy_en). Please ensure your passport is stamped on arrival in the Schengen area. For all other nationalities and for longer stays in countries covered by the Schengen Agreement (Australian New Zealand, Canadian and US passport holders), please contact the relevant embassy. Stays of longer than 90 days in the

Beer Connoisseurs Journey with Joshua M. Bernstein



Schengen area require a long stay visa for the country you are spending most time in. However long stay visas are unlikely to be issued unless there is a valid reason (eg. studying in country). Unfortunately we cannot assist in obtaining visas for long stays due to individual country visa requirements.

Czech Republic

****IMPORTANT NOTE****

ETIAS will be introduced in the last quarter of 2026. No action is required from travellers at this point. The European Union will inform about the specific date for the start of ETIAS several months prior to its launch. See https://travel-europe.europa.eu/etias_en

Until then, visas not required for citizens of Australia, Canada, USA and New Zealand for up to 90 days in a period of 180 days for all Schengen countries (see https://home-affairs.ec.europa.eu/policies/schengen-borders-and-visa/visa-policy_en . Please ensure your passport is stamped on arrival in the Schengen area. For all other nationalities and for longer stays in countries covered by the Schengen Agreement (Australian New Zealand, Canadian and US passport holders), please contact the relevant embassy. Stays of longer than 90 days in the Schengen area require a long stay visa for the country you are spending most time in. However long stay visas are unlikely to be issued unless there is a valid reason (eg. studying in country). Unfortunately we cannot assist in obtaining visas for long stays due to individual country visa requirements.

Please bear in mind that visas may be required for countries you are visiting en route or transiting through on the way to your destination. It is important that you check the requirements of all countries you will visit. Visa costs and requirements do change regularly so we suggest you check with your travel agent or World Expeditions reservations consultant. It is your responsibility to obtain all necessary visas.

webinars & events

Catch a Webinar – Live or On Demand - to learn more about a particular trip. Make sure the trip you choose is right for you. Watch them live, so you can ask our presenters a question, or catch the recording later at your leisure and watch it On Demand. Visit our website or keep an eye on our newsletter for upcoming presentations.

subscribe to our e-newsletter

Never miss another deal or spot on an exciting new trip! Be part of our adventure community, head to our website to subscribe to our free newsletter.

social networking

Connect with our community @

FACEBOOK: @worldexpeditions

facebook.com/worldexpeditions

INSTAGRAM: @worldexpeditions

Follow us at [instagram.com/worldexpeditions](https://www.instagram.com/worldexpeditions)

YOUTUBE: World Expeditions

Subscribe to our channel at [youtube.com/worldexpeditions](https://www.youtube.com/worldexpeditions)

Share the love

Use the hashtag #WorldExpeditions on your best travel photos and videos to be featured.

Beer Connoisseurs Journey with Joshua M. Bernstein



trip availability

We operate small group adventures, which means availability is always worth checking early. Check trip availability online or call our team who might be able to dig a little deeper for you to find what you want, when you want.

Many adventures require services that, if not available at the time you book (like an internal flight or permit) could mean the trip is unavailable. So, book early to avoid missing out on your dream adventure.

how to book

Check trip availability and book your tour online, or call or visit one of our offices. To book a trip, you will need to complete a Booking Form and pay a non-refundable deposit. Please note that when booking our tours to not confirm any additional arrangements until all services related to your tour are confirmed by your dedicated Reservations Consultant.