

Himalaya  
Indian  
Sub-continent

# Wild Ladakh: Ancient cultures & the elusive snow leopard with Garry Weare



## trip highlights

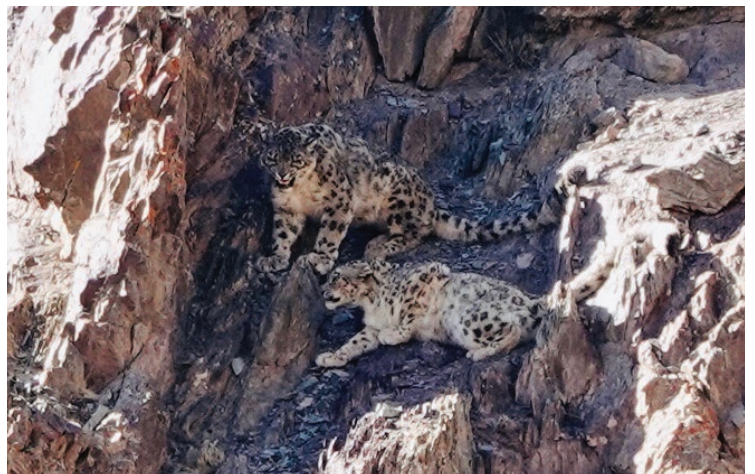
Unique opportunity to travel with Garry Weare and the Snow Leopard Conservancy, to enhance chances of spotting the elusive snow leopard

Gain rare insight into the region's culture, landscapes and wildlife from one of the world's leading authorities on the Indian Himalaya, Garry Weare

Spend five nights in Ulley, one of Ladakh's best known regions for snow leopard sightings

Take day walks to hidden Buddhist sites like Mangyu and Rizong, set amid snow covered hills and valleys

Experience the vibrant Likir masked dance festival



Trip Duration	14 days	Trip Code: JL27
Grade	Introductory	
Summary	14 day trip, 8 nights hotel and 5 nights well appointed lodge - with heating	

## welcome to World Expeditions

For over 50 years, we've been creating high-quality, expedition-style adventures for active travellers with a curious spirit. From our very first trek in the mountains of Nepal to pioneering remote routes across all seven continents, our journeys are built for those who want to truly explore – not just visit.

At the heart of what we do is a simple philosophy: take the paths less travelled.

This means travelling with care, supporting local communities, minimising our impact, and unlocking experiences that most travellers will never have.

If you're ready to go further and dig deeper, we invite you to join us on the Wild Ladakh: Ancient cultures & the elusive snow leopard with Garry Weare, a journey that captures the essence of a unique adventure.



# Wild Ladakh: Ancient cultures & the elusive snow leopard with Garry Weare



Single travellers are required to pay a single supplement when joining this adventure. Please refer to our website for the additional cost.

## the trip

In winter the Trans Himalaya region of Ladakh offers a wild and rugged landscape that appeals to the select few. On this unrivalled journey your travel with Himalayan expert Garry Weare through remote gorges and isolated settlements; explore ancient monasteries, attend vibrant festivals in a land famed for the grey ghost – the elusive snow leopard.

In the coldest months, snow leopards descend from the high peaks to hunt in lower valleys, offering one of the best chances to glimpse this rare and endangered predator in its natural habitat. Often called the “ghost of the mountains,” the snow leopard is known for its perfect camouflage.

From exploring Leh's palaces and stupas and the rarely visited monasteries of Mangyu and Rizong, this is an in-depth immersion into Ladakhi life. Spend five unforgettable nights in Ulley, a known snow leopard corridor, where we work closely with expert trackers and the Snow Leopard Conservancy to maximise our viewing chances.

This tour is accompanied by Garry Weare in conjunction with highly experienced local guide Nawang Tsering. Garry is one of the foremost authorities on the Indian Himalaya and a long-time contributor to its exploration, literature and conservation, this is a rare and rewarding winter journey. With his decades of experience and close ties to the Snow Leopard Conservancy in Leh, Garry offers unparalleled insight into Ladakh's landscapes, people, and wildlife.

## about your leader/escort

This tour is accompanied by Garry Weare in conjunction with highly experienced local guide Nawang Tsering. Garry has been involved with World Expeditions since its inception in the 1970s. He is a recognised authority on the Indian Himalaya with his intimate knowledge documented in his definitive Lonely Planet guide *Trekking in the Indian Himalaya* that he wrote for over 25 years.

Garry has also written his highly acclaimed *Long Walk in the Himalaya* and more recently *Kashmir: a Journey through history*. Garry is a founding director of the Australian Himalayan Foundation, Australian secretary of the Himalayan Club and holds a life times' achievement award for his commitment to the Indian Himalaya. Garry has a deep and abiding passion for snow leopards while his close friendships and working relationship with the Snow Leopard Conservancy (Leh) will ensure a memorable and rewarding experience.

## at a glance

DAY 1	02 FEB - ARRIVE DELHI
DAY 2	03 FEB - FLY TO LEH (3500M/11, 483FT), LOCAL SIGHTSEEING
DAY 3	04 FEB - IN LEH
DAY 4	05 FEB - IN LEH, LIKIR FESTIVAL
DAY 5	06 FEB - IN LEH, VISIT SHEY PALACE & MATHO MONASTERY
DAYS 6-10	07 TO 11 FEB - TRANSFER TO ULLEY (3950M/12,959FT)
DAY 11	12 FEB - RETURN TO LEH
DAY 12	13 FEB - IN LEH - EXCURSIONS FOR SNOW LEOPARD SIGHTINGS
DAY 13	14 FEB - IN LEH - EXCURSIONS FOR SNOW LEOPARD SIGHTINGS
DAY 14	15 FEB - TRIP CONCLUDES

## what's included

- Accompanied by Garry Weare in conjunction with highly experienced local guide, Nawang Tsering
- 13 breakfasts, 12 lunches and 12 dinners
- Good quality hotels in Delhi and Leh and superior lodge in Ulley - all with heating
- Expert bilingual guide



# Wild Ladakh: Ancient cultures & the elusive snow leopard with Garry Weare



## trip dates

**2027** 02 Feb - 15 Feb

## fast facts

**Countries Visited:**  
India

**Visas:**  
Yes\*

**Singles:**  
Single travellers who are unable to be matched with another single traveller of the same gender, must pay a single supplement on this trip.

**Leader:**  
Expert Local Leader & Escort

## thoughtful travel

The environments we travel through are fragile. It is our responsibility as visitors to minimise the impact of our presence.

World Expeditions were the proud recipients of the inaugural Australian National Travel Industry's Environmental Achievement award for our Responsible Travel Guidebook.

This detailed guide to responsible & sustainable travel is provided to all World Expeditions clients before they travel. Please ask your consultant if you have not received your copy of our award winning book. Alternatively, you may like to download a copy from our website [www.worldexpeditions.com](http://www.worldexpeditions.com)

## adventure travel

By its very nature adventure travel involves an element of the unexpected. To get the most out of your adventure it is important that you are flexible, positive and eager to take on all the challenges that arise.

- Wildlife entry fee to visit Ulley
- Expert snow leopard guides & telescopes
- Monastery festival fees and entry fees
- Private transportation

## what's not included

- International flights
- Internal flights Delhi-Leh-Delhi (budget approx USD300 per person)
- Travel insurance (compulsory)
- Single supplement when booked in your own room (limited to 3 only due to the lodge capacity)
- Meals not detailed in the itinerary
- Bottled water and alcoholic drinks
- Tips
- Visa

## detailed itinerary

### DAY 1 02 Feb - Arrive Delhi

On arrival in Delhi you will be met by a World Expeditions representative and transferred to your hotel. Should you arrive earlier, we are happy to assist with optional sightseeing.

Due to the differing times of arrival of group members and the early morning departure to Leh on day 2, the main tour briefing in Leh. In Delhi you will be briefed about options for luggage storage and the departure time to the airport.

NOTE: If you are arriving in Delhi on a late night flight, you may like to arrive the day before your trip commences. Please talk to your World Expeditions reservations consultant for pre-tour accommodation options.

Overnight: The Metropolitan, Delhi  
meals: NIL

### DAY 2 03 Feb - Fly to Leh (3500m/11, 483ft), Local sightseeing

An early morning flight takes us across the snow draped peaks of the Great Himalaya and Zaskar ranges, a breathtaking preview of the landscapes to come. Today is about gentle acclimatisation. With Leh sitting at 3500m/11483ft, it's important to rest and adjust slowly to the altitude. In the afternoon, we take a short, optional orientation walk through Leh's old town, browsing the main market and winding alleyways.

Overnight: Lakrook Boutique Hotel, Leh

NOTE: The internal flights are not included in the tour cost. We will nominate a group flight and will be very happy to assist in booking this for you.

\*The standard checked luggage allowance for internal flights in India is 15kg. Additional kilos can be purchased with your ticket, or at the airport.

meals: B,L,D

### DAY 3 04 Feb - In Leh

We explore Leh, including the Victory Fort and the impressive nine storey Kings Palace that has been extensively renovated over the last 20 years. We visit Chanspa

# Wild Ladakh: Ancient cultures & the elusive snow leopard with Garry Weare



with its ancient chortens and the remains of the cities earliest settlement and also visit the Snow Leopard Conservancy in Leh to appreciate some of the field work they have been undertaking in recent years.

Overnight: Lakrook Boutique Hotel, Leh

meals: B,L,D

## DAY 4 05 Feb - In Leh, Likir festival

An early start to complete the drive to Likir before the commencement of the masked dances. Likir is the oldest monastery subscribing to the Gelugpa or yellow hat sect – the most dominant Tibetan school of Buddhism founded by the 1st Dalai Lama in the 15th century. For the monks and surrounding communities, this is a deeply significant annual event. The Monastery courtyard becomes the stage for the sacred Cham dances, with each movement a symbolic offering to ward off evil and usher in blessings for the year ahead.

Overnight: Lakrook Boutique Hotel, Leh

meals: B,L,D

## DAY 5 06 Feb - In Leh, visit Shey Palace & Matho monastery

We reserve half a day to visit Shey Palace with its two storied 'gold' Buddha and ancient rock carvings that may date back to the time when the first Buddhist monks undertook a pilgrimage through Ladakh two thousand years ago. We continue to Matho Monastery, one of the least monasteries in the upper Indus Valley. The monastery is part of the Sakya sect with deep seated connections to the allied monasteries in Tibet.

Overnight: Lakrook Boutique Hotel, Leh

meals: B,L,D

## DAYS 6-10 07 to 11 Feb - Transfer to Ulley (3950m/12,959ft)

This morning we drive 2 hours to the remote village of Ulley, tucked deep within a side valley of the Ladakh Range. Known for its rugged isolation and snow leopard sightings, Ulley offers an extraordinary base for wildlife observation in winter. We settle into our cosy and well appointed lodge, warm, inviting, and ideally positioned for scanning the surrounding ridgelines. Over the next five nights, this will be our base for immersion in the snow leopard's domain.

Local trackers, will be out from dawn to dusk scanning for signs of the "ghost of the mountains." We'll venture to quiet vantage points, to scan the slopes and wait for movement among the rocks. Garry Weare's long standing connection to the region and close relationship with the Snow Leopard Conservancy adds unique insight, offering context, stories, and expert interpretation that deepen our understanding of both the landscape and the elusive cat. While every effort will be made to spot a snow leopard, sightings are never guaranteed, these elusive creatures operate on no one's schedule but their own.

During our stay there will be ample time to explore the outlying villages and culture. This includes visits to the nearby settlement at Hemis Shukpachan (where snow leopard sightings are by no means uncommon) and from where if conditions allow we complete a rewarding walk for around three hours, crossing our gentle passes on paths that once formed part of the original royal highway to Leh, centuries before a route was carved along the Indus. Our trail leads to Tingmosgang, once a capital of lower Ladakh, steeped in history and set beneath dramatic terrain.

We also plan to visit the 11th century monastic site at Mangyu, (also cited for regular snow leopard sightings) as well as the famous monastic complex at Alchi which

# Wild Ladakh: Ancient cultures & the elusive snow leopard with Garry Weare



attracts a mere handful of visitors in winter. A further highlight when based in Ulley is to explore the Rizdong monastery, 19th century retreat with its traditional cooking oven.

Accommodation: Shan Lodge, Ulley

meals: B,L,D

## DAY 11 12 Feb - Return to Leh

After a final morning scanning the slopes for signs of the snow leopard, we return to Leh to relax and enjoy free time in the area.

Overnight: Lakrook Boutique Hotel, Leh

meals: B,L,D

## DAY 12 13 Feb - In Leh - Excursions for snow leopard sightings

We've set aside two flexible days to make the most of potential snow leopard activity within driving distance of Leh, working closely with the Snow Leopard Conservancy and their trusted network of spotters. Our plans will remain adaptable, giving us the best chance of responding to fresh leads in the field. When not actively searching, we'll enjoy further local exploration around Leh.

Overnight: Lakrook Boutique Hotel, Leh

meals: B,L,D

## DAY 13 14 Feb - In Leh - Excursions for snow leopard sightings

A free day to rest and reflect on your journey, from the dramatic winter landscapes to the unforgettable search for the elusive snow leopard. You may wish to visit a final monastery, browse for local crafts, or simply take in the views one last time. In the evening, we gather for a celebratory farewell dinner to mark the end of our extraordinary time in Ladakh.

Overnight: Lakrook Boutique Hotel, Leh

meals: B,L,D

## DAY 14 15 Feb - Trip concludes

Our trip concludes in Leh after breakfast. You are welcome to book additional accommodation in Leh, Delhi or further arrangements in India or Nepal. A transfer from the Leh hotel, to the airport will be provided. Any additional services, we are happy to assist with, at an additional cost.

NOTE: The internal flights are not included in the tour cost. We will nominate a group flight and are happy to assist in booking this for you.

meals: B

This itinerary is subject to change with any change in Community regulations as well as Governmental changes and natural circumstances beyond our control.

## country information

India has fascinated travelers for thousands of years. It's exotic, romantic and diverse – from the Himalayan mountains in the north, to the barren deserts in the west, to lush rainforests and sandy beaches in the south. India's population of around 1.3 billion people are predominantly Hindu, however many cultures and traditions have greatly influenced modern Indian life, including Islam. Some of the most impressive temples, particularly in the north, have been built by the smaller Jain and Buddhist communities. While many regional languages are spoken in India, Hindi is the national language. English is the second language and is widely taught and spoken throughout India. Ladakh is often referred to as 'Little Tibet' on account of its close cultural and geographic ties with Tibet. It is a spectacular landscape of high mountain passes.

# Wild Ladakh: Ancient cultures & the elusive snow leopard with Garry Weare



remote villages, ancient Buddhist monasteries and lush valleys fed by glacial streams contrasted against the otherwise rugged and barren high Himalayan landscape.

## climate

Ladakh is located north of the main Himalaya range beyond the influence of the Indian monsoon. Humidity is low and rainfall often no more than a few centimetres even in winter. If well prepared, this is an opportune time to visit Ladakh. Anticipate day time temperatures to minus 10C while at night the temperatures fall to around minus 20C. Rest assured all accommodation in Ladakh is heated and well insulated from inclement weather conditions.

## dietary requirements

Provided we are advised in advance of your departure we are able to cater for vegetarian diets and can assist with medically recommended diets (allergies and intolerances). Please note that options are likely to be limited in very remote locations. We are unable to guarantee a peanut-free or allergen-free trip, and therefore, we strongly encourage that travellers with life-threatening or severe allergies take all necessary medical precautions to prepare for the possibility of exposure. Passengers must travel with all necessary medications for food allergies and be capable of self-administering these medications.

## accommodation on the trip



Our intended accommodations have been detailed in the trip information, however are subject to change.

## acute mountain sickness

When we ascend above 2500 metres our bodies have to acclimatise to the decreasing amount of the oxygen available. To allow our bodies to adjust we have structured our treks so that you ascend slowly, allowing acclimatisation to occur. However, during the acclimatisation process, you may experience some of the following symptoms.

- Headache
- Tiredness
- Disturbed sleep
- Loss of appetite/nausea
- Shortness of breath
- Cough
- Palpitation
- Swelling of the hands and face

Individuals acclimatise at different rates. Your best strategy is to take your time and drink plenty of water. These symptoms may not indicate the onset of A.M.S. and if you experience them it does not necessarily mean that you should not continue. All our group leaders have extensive first aid training and we urge you to communicate with the group leader at all times should you believe you have any symptoms in order that we can effectively monitor your symptoms. The only cure for Acute Mountain Sickness is to descend.

# Wild Ladakh: Ancient cultures & the elusive snow leopard with Garry Weare



Please note that your group leader has ultimate responsibility and may ask you to descend if symptoms persist.

## visas

India Entry Requirements – e-Visa and e-Arrival Card

### 1. Mandatory: e-Visa (Electronic Travel Authorisation)

All travellers must obtain an electronic visa (e-Visa), officially known as an Electronic Travel Authorisation (ETA), before arriving in India.

Visas are not available on arrival.

This applies to citizens of eligible countries, including Australia, New Zealand, the United States, Canada and the United Kingdom.

When to Apply

- e-Visas can be submitted from 120 days before arrival
- Early application is strongly recommended.

Apply only via the official government site:

<https://indianvisaonline.gov.in/evisa/tvoa.html>

What You Need to Know

- Print a hard copy of your approved e-Visa – required at airport check-in
- Your passport must be machine-readable – handwritten or damaged passports may be refused
- Your visa will be stamped into your passport on arrival
- Immigration queues can be lengthy, regardless of visa type
- Not all Indian airports accept e-Visa entry – confirm your arrival airport is eligible

e-Visa Types

- Tourist e-Visas are available for 30 days or one year, check with your reservations consultant to confirm the appropriate option.
- Avoid third-party providers – only apply through the official website

### 2. Mandatory: e-Arrival Card (Within 72 Hours of Travel)

In addition to the e-Visa, all travellers must complete an e-Arrival Card online within 72 hours prior to arrival in India.

This applies to:

- All foreign passport holders, including Australian citizens
- Overseas Citizen of India (OCI) cardholders

Apply here:

<https://indianvisaonline.gov.in/earrival/>

How to Complete the e-Arrival Card

1. Gather your details – passport, visa (if applicable), flight itinerary and accommodation
2. Visit the official site – linked above
3. Complete the form – enter your personal, passport, travel and stay information
4. Submit online – must be completed before departure

We recommend completing this as early as possible within the 72-hour window to avoid delays at immigration.

Please bear in mind that visas may be required for countries you are visiting en route or transiting through on the way to your destination. It is important that you check the requirements of all countries you will visit. Visa costs and requirements do change regularly so we suggest you check

# Wild Ladakh: Ancient cultures & the elusive snow leopard with Garry Weare



with your travel agent or World Expeditions reservations consultant. It is your responsibility to obtain all necessary visas.

## how to book

To book a World Expeditions trip, please complete your online booking form and pay a non-refundable deposit. We can also help you with any additional arrangements that you require, such as airfares and pre or post trip accommodation.