

tarkine explorer



trip highlights

- Smoking ceremony at Laraturunawn
- Full day cruise along maytim/Arthur River
- Half day cruise along the Pieman River
- Explore rugged, not easily accessed coast lines
- Walk through ancient rainforests to some of the largest trees in Tasmania
- Gain bird's eye views of the takayna/Tarkine region from mountain tops



Trip Duration	6 days	Trip Code: TAR
Grade	Introductory to Moderate	
Activities	Day Walking, River Cruise	
Summary	6 day trip, 5 days walking, 1 day river cruise, plus half day river cruise, 5 nights accommodation	

Tasmanian Expeditions

Thank you for your interest in our Tarkine Explorer trip. Tasmanian Expeditions offers the largest range of active adventure holidays across Australia's island state. With over three decades of experience, our comprehensive range of active trips include every iconic Tasmanian walk, Franklin River rafting expeditions, Self Guided walking and cycling trips, Family and Gourmet Adventures as well as award-winning Multi Activity tours. We also offer a number of carefully selected accommodated walks and day tours operated by trusted partners. All our guided tours are led by highly experienced and passionate guides and include meals, internal transport, accommodation, National Park fees and group camping equipment. If you cannot find the right trip for you we can easily customise a private trip or special itinerary just for your group.

why travel with Tasmanian Expeditions?

When it comes to experiencing the very best of the Tasmanian wilderness it makes sense to travel with Tasmanian Expeditions. In each and every trip we combine:

- 30 + years experience
- Experienced and professional guides
- An unblemished safety record
- 24 hour backup
- A commitment to sustainable travel practices
- Quality equipment
- Delicious meals sourced from Tasmanian produce

Each and every trip will provide you with a high quality experience that represents unsurpassed value for money. We look forward to helping you explore our amazing wilderness - the right way.



tarkine explorer

An active adventure through the Tarkine's mountains, rivers, coasts and forests



trip dates

2026 01 Dec - 06 Dec **H**

2027 12 Jan - 17 Jan **H**
27 Jan - 01 Feb **H**
03 Mar - 08 Mar

important notes

H - High Season

DN1 - A high season supplement applies from 1 December to 15 February, and for any trip that overlaps a public holiday.

Tasmanian Expeditions does not require single travellers pay a surcharge for travelling alone. We will arrange for you to share accommodation with another traveller of the same sex and if we cannot match you up we will provide a single room (or tent if applicable) at no extra charge. If you prefer not to share, a single supplement is payable to guarantee your own room (or tent if applicable) pending availability. Please refer to our website for the additional cost.

the trip

Tasmania's takayna/Tarkine region in the North West is abundant in history, fascinating flora and fauna, impressive rainforest and dramatic coastlines. It is a 450,000 hectare landmass that contains 6000+ year old stone carvings, a natural history that dates back 100 million years to a time when Tasmania was once part of Gondwana, rainforests that provide sanctuary for at least 60 rare or endangered species and coastal plains that provide important feeding grounds for the world's rarest and fastest parrots - the orange bellied and swift parrots.

Over six days you will journey through this impressive part of Tasmania, exploring rainforests, coast lines and mountains. You will marvel at the sheer height of trees and the impressively clean water rushing down waterfalls. The peace and quiet you will enjoy while walking through ancient forests and along gnarly coastlines will leave you with a real sense of awe and wonder. Enjoy a cruise up maytim (Arthur River), known as one of the last truly 'wild rivers' of Australia bordered by a dense forest filled with myrtles, sassafras, celery-top pine, laurels, blackwoods, and giant tree ferns.

Each day we make the most of the great outdoors, and each evening is spent celebrating and relaxing over a delicious 3-course meal showcasing the finest of Tasmania's famous produce.

at a glance

OUR TEAM WILL CALL YOU THE DAY BEFORE THE TOUR COMMENCES TO CONFIRM EXACT PICK UP TIME AND LOCATIONS. IF YOU ARE TRAVELLING FROM OVERSEAS PLEASE ADVISE THE TASMANIAN EXPEDITIONS OFFICE OF YOUR AUSTRALIAN CONTACT DETAILS.

DAY 1	LAUNCESTON TO ARTHUR RIVER – SMOKING CEREMONY & SUNDOWN POINT
DAY 2	ARTHUR RIVER – MAYTIM/ARTHUR RIVER CRUISE
DAY 3	ARTHUR RIVER TO CORINNA – MT DONALDSON AND SAVAGE RIVER WALK
DAY 4	CORINNA – PIEMAN HEADS & CONICAL ROCKS
DAY 5	CORINNA TO TULLAH – ZEEHAN CULTURAL CENTER & MONTEZUMA FALLS
DAY 6	TULLAH TO LAUNCESTON – MT FARRELL

what's included

- Professional walking guides
- 5 breakfasts, 6 lunches, 5 dinners, snacks and hot drinks
- 2 nights restaurant meal
- 5 nights accommodation in cabin/apartment style accommodation with multiple rooms and shared bathrooms
- Transport by private minibus
- Smoking Ceremony/Cultural engagement
- maytim/Arthur River full day cruise (not included on 23 December 2024 departure, discount applies on this date)
- ruyinrim (Pieman River) half day cruise
- National Park entry fees
- Emergency communications and group first-aid kit

what's not included

- Travel to and from Launceston
- Accommodation before or after the trip
- Items of a personal nature: alcoholic beverages, car parking etc
- Travel insurance
- Face masks and hand sanitiser

tarkine explorer

An active adventure through the Tarkine's mountains, rivers, coasts and forests



detailed itinerary

The tour commences with a hotel pick-up at approximately 6:00am. Our team will call you the day before departure to confirm the exact time and location. If travelling from overseas please be sure to inform the Tasmanian Expeditions office of your Australian contact details or best email contact. Please be patient while waiting for the pick up as sometimes there can be the odd, unexpected delay.

After all guests have been collected, your guides will transfer you to a suitable location to conduct a thorough trip briefing which will be approximately 1 hour in duration and will include the following:

- Full introduction to your guides and any other group members
- An outline of the general itinerary/objectives of the tour
- A cross-check of essential gear and clothing required
- Distribution of all hire gear included in the tour price and/or requested
- Explanations of what is expected from the group and individual participants
- Identification of inherent risks of the trip and outline emergency procedures
- Explanation of Leave no Trace principles and overall conservation strategies
- Forecast weather conditions

DAY 1 Launceston to Arthur River – Smoking Ceremony & Sundown Point

We pick you up early this morning in Launceston, from one of our two pick up locations. Our first pick up point is at 6:15am from the Grand Chancellor and our second pick up point is at 6:30am at the Penny Royal. We will then drive 40 minutes to a favourite local café en route. Here with a hot drink and snack in hand your guides will spread out their maps and give you an overview of the week ahead!

Once all your questions are answered it is back on the bus to complete the drive to the West Coast. First stop Laraturunawn/Sundown Point. We have arranged to be met here by a representative from the Tasmanian Aboriginal community who will welcome you to their Country with a smoking ceremony and cultural discussion to start your trip off right. Following our discussion we will walk down Sundown Creek down onto the rugged and gnarley coast line. Here is where you can find ancient rock carvings and spectacular views of the Arthur Heads, continuing up the beach we can get to know each other and talk about the week to come as we walk right up to our accommodation for the next 2 nights at Arthur River.

Drive Time: 3.5 hrs.

Walk distance: 8km.

Walk Time: 2 hrs.

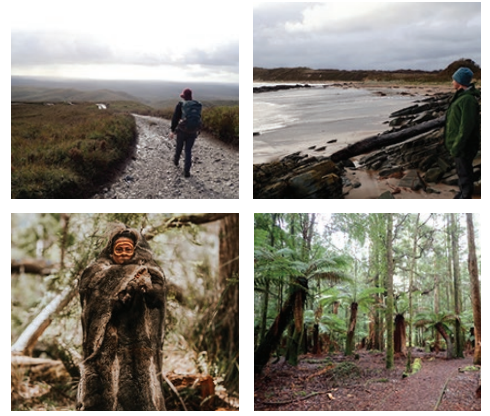
Other Activities: Smoking Ceremony/Cultural engagement – 2 hrs.

Accommodation: Arthur River.

meals: L,D

tarkine explorer

An active adventure through the Tarkine's mountains, rivers, coasts and forests



fast facts

Group Size Min:

7

Group Size Max:

12

Advice for people with limited mobility

This trip is not suitable for people with limited mobility.

Brochure Reference:

Tasmanian Expeditions

responsible travel

Tasmanian Expeditions operates in some of the world's most pristine and beautiful environments, including the Tasmanian Wilderness World Heritage area. Our passion for the Tasmanian wilderness is at the core of our values; we are informed and guided by this, ensuring that everything we do is carefully managed for sustainability. We have an exceptional record of successfully utilising minimum impact procedures to ensure that the wilderness values that inspire us are undiminished by our activities. We invite you to experience the Tasmanian wilderness with us, so that you can experience the transformation that nature can bring, yet be assured that you will not be transforming nature. Our environmental policies together with your help and co-operation will ensure that we can safeguard the pristine wilderness areas in which we operate.

Visit our website to learn more about our Leave No Trace policy.

trip grading

DAY 2 Arthur River – maytim/Arthur River Cruise

A cruise on the Arthur River is an unforgettable wilderness experience. Enjoy a relaxing breakfast before heading out on the boat mid morning. This is one of the best cruises in Tasmania taking us on a journey from the river mouth upstream for 15km past the Arthur and Frankland river junctions before continuing on to Warra Landing for lunch.

The Arthur River is one of the last truly "wild rivers" of Australia. The area we cruise through is fringed with a very dense forest of myrtles, sassafras, celery-top pine, laurels, blackwoods, and giant tree ferns. This cruise really is an unforgettable experience.

At the conclusion of the cruise we have the option to go for another short group beach walk or relax at the accommodation.

Drive Time: 30 mins.

Walk Time: 1-2 hrs.

Other Activities: Cruise – 6 hrs.

Accommodation: Arthur River.

meals: B,L,D

DAY 3 Arthur River to Corinna – Mt Donaldson and Savage River Walk

We will get an early jump on the day with a coffee to go and breakfast on the bus, it will certainly be worth the early morning effort when you see what is in store! Driving south we will arrive at the trailhead to Mt Donaldson, this 4 hour walk will see you traverse dense rainforest, before rising out onto button grass plains allowing you a beautiful view of the ruyinrim/Pieman River and the surrounding forests. This land was one of the last known homes to the Thylacine or the Tasmanian Tiger, known to the Aboriginal people of the region as Corinna. Once we are back from the summit we will enjoy lunch and replenish our snacks at the bus before continuing through the rainforest in the opposite direction. Following the Savage River – keep your eyes out for gold- on a faintly marked track it is unlikely that we will see another soul as we journey through this ancient forest as it leads us directly to the doorstep of our home for the next 2 nights, the Corinna Wilderness Lodge, with just enough time for a shower before dinner. Tonight we enjoy dinner together at the Tannin Restaurant. Here we can enjoy an excellent meal sourced from local Tasmanian ingredients such as Tasmanian leatherwood honey, seafood and meat from local businesses.

Drive Time: 2.5 hrs.

Walk Distance: 13km.

Walk Time: 6 hrs.

Other Activities: Nil.

Accommodation: Corinna.

meals: B,L,D

tarkine explorer

An active adventure through the Tarkine's mountains, rivers, coasts and forests



Introductory to Moderate

This adventure involves trekking from 2 hours, up to 6 hours most days at a steady pace. You will need a good level of fitness and must be in good health. Be prepared for potential variable weather conditions. The first walking day is predominantly sand walking on the beach while the remaining walks are a mix of rainforest with sometimes slippery forest paths and jutting tree roots or rocks on either flat or sometimes steep ground, button grass plains with very narrow dirt tracks which at times are only the width of your foot with small loose rocks underfoot, and mountainside clay-type narrow tracks also with loose rocks underfoot. On the Savage River Walk there are some small sections requiring you to hold onto a rope while ascending or descending a steep hill and/or climb over obstacles – no technical skills are required, and your guides will assist you through these safely.

Suggested preparation: 45 minutes of aerobic type exercise, three to four times a week. Hill walking with a pack in variable weather conditions is also recommended to ensure you are feeling fit and strong enough to gain maximum enjoyment from this trip.

adventure travel

By its very nature adventure travel involves an element of the unexpected. Remote areas are sometimes unpredictable and itineraries may be altered. To get the most out of your adventure it is important that you are flexible, positive and eager to take on all the challenges that arise. If you are uncertain about your suitability for this trip we recommend that you speak with our trained staff.

DAY 4 Corinna – Pieman Heads & Conical Rocks

Departing at sunrise, we journey down the ruyinrim/Pieman River on the Lady Jane– weather permitting - the dark waters of ruyinrim can create mirror-like reflections of the surrounding rainforest. Ancient Huon pines line the banks of river, enjoy the sounds of the forest waking up as you approach the Pieman Heads.

We disembark on the southern edge of the river mouth and spend the next few hours exploring the coastline. Heading south we reach the extraordinary coastal rock formation known as the Conical Rocks.

We make our way back to the Pieman Heads for a picnic lunch and jump aboard the Arcadia II, a historic vessel with decking made from Huon pine, for the journey back to Corinna.

The remainder of the afternoon will be at leisure.

Drive Time: Nil.

Walk Distance: 12km.

Walk Time: 5 hrs.

Other Activities: Cruise: 2.5 hrs.

Accommodation: Corinna.

*If either vessel is not available, we will be switched to the best alternative vessel.

meals: B,L,D

DAY 5 Corinna to Tullah – Zeehan Cultural Center & Montezuma Falls

We start our journey with a fun ride across the ruyinrim/Pieman River on the Fatman Barge. This remote western road then takes us through sleepy towns that were once booming with the riches of Early Mining. It is this area of Tasmania that flourished in the early pioneering days.

In 1900 Zeehan was the 3rd largest town in Tasmania, however with the decline of the West Coast mining boom the town has dwindled to a population of approx 700. The once bustling main street is now home to the West Coast Heritage Centre, an extensive collection of history that we will take a couple of hours to wander.

After lunch we will continue on to Montezuma Falls. At 104m this is Tasmania's tallest waterfall. The return walk to reach the falls follows the historic route of the North East Dundas Tramway. This easily graded walk allows you to look up from your feet and out at the thousands of Tree Ferns that line the trail all the way to the falls.

Drive Time: 2 hrs.

Walk Distance 8km.

Walk Time: 3 hrs.

Other Activities: Museum – 2 hrs.

Accommodation: Tullah Lakeside Lodge

meals: B,L,D

tarkine explorer

An active adventure through the Tarkine's mountains, rivers, coasts and forests



important note

The above itinerary is to be taken as a guide only. Inclement weather, group fitness and a number of other factors may influence our planned itinerary causing delays and variations. The Tasmanian Expeditions group leader reserves the right to make modifications and or alterations to the trip's itinerary in the best interests of all involved.

DAY 6 Tullah to Launceston – Mt Farrell

This morning we will depart with the sun for a short drive to our final walk of the week, the highly rewarding Mt Farrell. This return hike starts out in the familiar rainforests with rich stands of Myrtle and lively ferns before climbing out of the forest into the Buttongrass moorland that leads you to the craggy peaks of the ridgeline with arresting views of the Tarkine.

Once you are back on the bus get comfortable for a beautiful scenic drive back to Launceston where you will conclude your tour. We usually arrive back into Launceston at around 4-5pm, our two drop-off points in Launceston are the Grand Chancellor and the Penny Royal. We recommend booking a post tour night in Launceston.

Drive Time: 2.5 hrs.

Walking Distance 9km.

Walk Time: 4 hrs.

Other Activities: Nil.

meals: B,L

This itinerary is subject to change with any change in Community regulations as well as Governmental changes and natural circumstances beyond our control.

climate

Tasmania is located between Latitudes 40 and 43, with the island's temperature and weather moderated by the surrounding oceans. The cool temperate climate offers four distinct seasons which can interchange on any given day of the year. Summer North West Coast temperatures range from highs of 16–25 degrees C and lows of 6–11 degrees C. The average annual rainfall for the west coast is 2400mm. January (150mm) and February (100mm) typically averages only one-third of the rainfall of July and August, though even in the driest months rain usually falls on every second day.

Please be prepared for possible rain and cold temperatures at any time of the year. For group safety and comfort having adequate gear and equipment for the local conditions will ensure your active adventure is enjoyable.

a typical day

Each day, each group and each guide may influence itinerary details but the following gives you an idea of timing:

Days begin by fueling up with a delicious breakfast at around 7am. After packing up our gear we're off on our walking adventure! We are out exploring the great outdoors all day, with plenty of short stops for snacks and to replenish our fluids. Your guides will prepare a well-earned picnic lunch while out on the track. This leisurely lunch break is the perfect chance to relax and take in the scenery. After lunch we continue walking into the afternoon. Some days require vehicle transfers during or at the end of the day's activities.

We arrive at our accommodation around 5pm. After unpacking, your guides will be busy creating the evening's meal, giving you the chance to have a shower, don clean clothes, go for a quiet stroll, or kick back with a drink. Over dinner, as the sun is setting, your guides will give an exciting and informative briefing on the following day's activities.

dietary requirements

Provided we are advised in advance we are able to cater for vegetarian diets, and can assist with food intolerances. Please ensure you discuss your requirements with us at least a month prior to your trip to determine whether we can cater for your dietary needs. Please note that options are likely to be limited in remote locations or alternatives can be more expensive or unavailable and there may be times when those with special requirements need to provide their own food. As we are unable to guarantee a nut-free or allergen-free trip we strongly

tarkine explorer

An active adventure through the Tarkine's mountains, rivers, coasts and forests



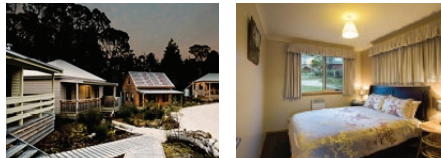
encourage travelers with severe or life-threatening allergies to take all necessary medical precautions. Guests must travel with all necessary medication for allergies and be capable of self-administration.

hygiene

Tasmanian Expeditions is deeply committed to ensuring the natural heritage and wilderness values of Tasmania are undiminished for generations to come. The following policies and techniques for personal hygiene in the wilderness will help to reduce our impact and ensure our trip is sustainable:

- Toilets are located at your accommodation. Some flushing and composting toilets are available out on the track; your guides will tell you when and where. In the wilderness we need to dispose of waste as per Leave No Trace Principles, which will be explained by your guides. Toilet paper will be provided.
- Showers are provided at your accommodation.
- If possible, organic/natural brands of toothpaste, sunscreen, insect repellent and deodorant are preferred.
- Hand sanitiser will be provided at mealtimes and around the accommodation. Having a small personal quantity is also recommended – 60ml is sufficient.

accommodation on the trip



For the duration of the tour simple cabin/apartment style accommodation is provided. The Tarkine is a region with a very limited choice of accommodation and we use carefully selected accommodation which have multiple rooms and shared bathrooms. Full bedding and bath towels are provided at each accommodation.

There is limited availability for single supplements. Single rooms are only available for nights 3-5 of the trip.

pre and post tour accommodation

Our preferred hotel in Launceston for pre and post tour accommodation is the Penny Royal Leisure Inn. Once your trip booking has been confirmed your reservations consultant will send you a booking link and a discount code for the hotel. The Penny Royal Leisure Inn offers a discount of 15% for all Tasmanian Expeditions clients. Alternatively we have discounted rates and are happy to book the accommodation on your behalf. Discounted rates are not available during Christmas, New Years, Easter, and other peak periods throughout the year.

what you carry

This accommodated trip offers a combination of short, moderate and long day walks that will require you to carry a small back pack only. The pack should be 30-40 litres in capacity and should weigh approximately 7-8kg once packed for the day. It will need to contain the following items:

- Water carrying capacity 2-3 Litre
- Water proof jacket
- Water proof overpants

tarkine explorer

An active adventure through the Tarkine's mountains, rivers, coasts and forests



- Base layer thermal clothing
- Sun protection: sunscreen, sunglasses and hat
- Trail snacks provided by your guide
- Small portion of the group lunch if required
- Other personal gear, such as camera

equipment required

Tasmanian Expeditions has a specialist gear list available that details what clothing and equipment is required for each of our Tasmanian adventures. The gear list is specific to the type of tour you will be joining us on and it provides a clear description of what is included in the tour cost, what items are available for hire and what you will need to bring with you. Brand recommendations and the individual weight of the gear provided is also included.

protecting the environment

Tasmanian Expeditions operates in some of the world's most pristine and beautiful environments, including the Tasmanian Wilderness World Heritage Area. It is our priority to leave these places unspoilt and as they were for all future visitors to enjoy.

The Leave No Trace principles and minimal impact travel practices specific for your adventure will be introduced at the initial group briefing and reinforced by your guides when required out in the field. Following our 'hygiene' suggestions listed in this brochure is a productive first step in helping the environment. Our environmental policies together with your help and cooperation will ensure that we can safeguard the pristine wilderness in which we operate.

In 2013 we achieved Ecotourism Certification at the ECO IV level for all the tours we own and operate. The ECO Certification Program is a world first, developed to address the need to identify genuine nature and ecotourism operators. The program is now being exported to the rest of the world as the International ECO Certification Program.

private groups

The adventures featured in our brochure and on our website are just a starting point for many of our private group travellers. We love creating custom designed itineraries for groups of friends, work colleagues, charities, schools and clubs. Our staff will assist you with all aspects of your private group adventure. Contact our office today.

get social

You can view photos and grab tips from our community of travellers or be the first to know about deals and special events at [Facebook.com/TasmanianExpeditions](https://www.facebook.com/TasmanianExpeditions) or on [Instagram/TasmanianExpeditions](https://www.instagram.com/TasmanianExpeditions/) or at [Twitter.com/TasExp](https://www.twitter.com/TasExp)

subscribe to our e-newsletter

Subscribe to our e-newsletter! Be kept up to date with our new and exciting adventure opportunities, special promotions and adventure news. You can subscribe through our website or by contacting our office.

trip availability

If this trip sounds right for you then we encourage you to call us now to check availability. Limited space on our small group trips is just one reason why you may not be able to join your desired departure. Many of our adventures require us to secure services on your behalf far in advance, such as reserving Ferry tickets and booking accommodation. The demand is increasing each year making it difficult to join a trip last minute. To ensure we can assist you

tarkine explorer

An active adventure through the Tarkine's mountains, rivers, coasts and forests



onto your adventure of a lifetime we ask that you contact our reservations team at your earliest convenience.

how to book

To book this trip, you will need to complete a booking form and pay a non refundable deposit which you can do by using our online booking function, or if you prefer, download a booking form from the website www.tasmanianexpeditions.com.au and return to us by email, or mail your booking form and deposit to Tasmanian Expeditions.

If you have any questions please call Tasmanian Expeditions or your nearest World Expeditions office.

TASMANIAN EXPEDITIONS

1300 666 856

WORLD EXPEDITIONS:

Australia: 1300 720 000

United Kingdom: 0800 0744 135

New Zealand: 0800 350 354

Canada and USA: 1 800 567 2216